



Responsible AI at Microsoft

Charles Verdon

Data & AI Lead

Strategic Partnership Team, Asia

AI Transformation

Opportunities



Enrich employee
experiences



Reinvent customer
engagement



Reshape business
processes



Bend the curve on
innovation

Governance is necessary for AI adoption

Barriers to AI adoption

35%

mistakes/errors with real-world consequences

29%

general loss of trust due to bias, hallucinations and inaccuracies

Ambition

Organizations understand the importance of **governance, risk, and compliance** for responsible AI adoption.

vs

Activating

Building **cross-functional teams** to identify risks and define processes, determining executive sponsorship and accountability.

Barriers to AI development & deployment

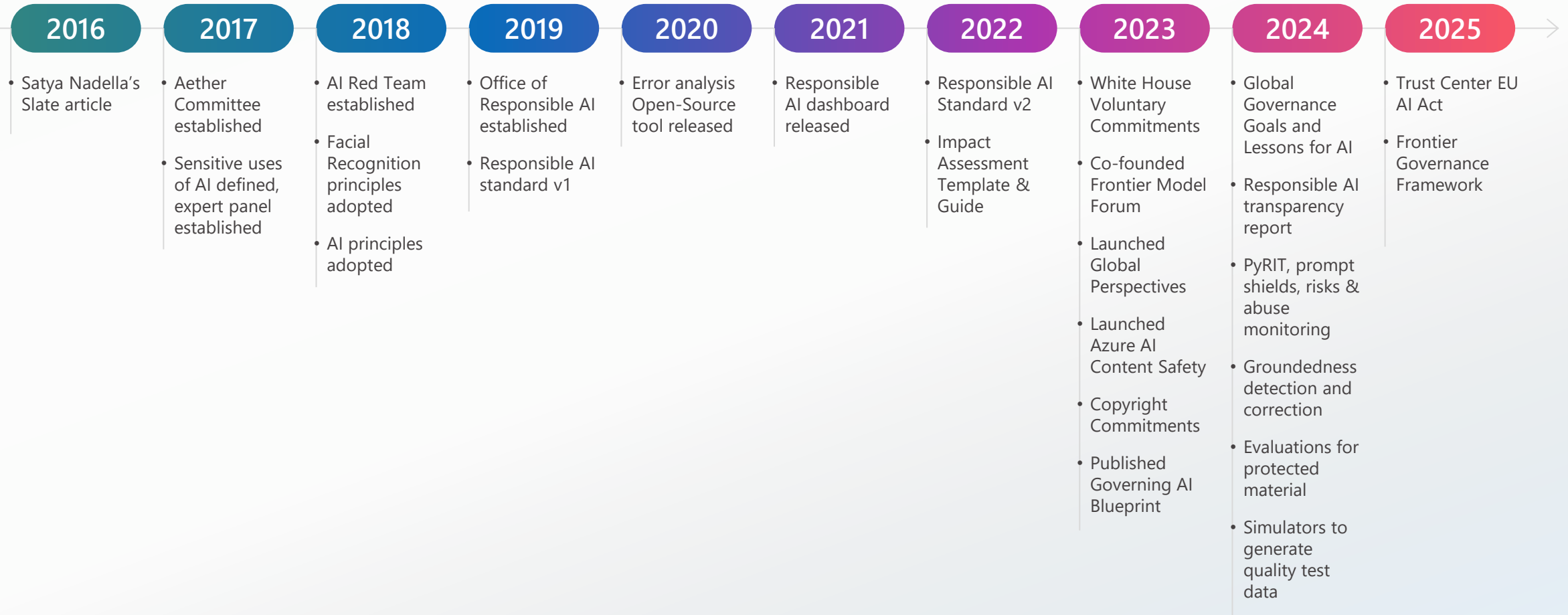
Worried about regulatory compliance

Difficulty managing risks

Implementation challenges

Microsoft's commitment is
to build AI systems that are safe,
secure, and trustworthy **by design**

Our Responsible AI Journey



Microsoft's AI Principles



Fairness



Reliability
& Safety



Privacy &
Security



Inclusiveness



Transparency



Accountability

Microsoft's Responsible AI framework

Principles

Fairness • Privacy and security • Transparency
Reliability and safety • Inclusiveness • Accountability

Corporate Standard

Goals • Requirements • Practices

Implementation

Processes • Training • Tools

Oversight

Monitoring • Reporting • Auditing

How we build generative AI systems

We use a multi-layered approach to manage and mitigate risks for generative AI systems across the AI development lifecycle



Govern

Roles and responsibilities
Documented processes
Culture of risk management



Map

Impact assessment
Red teaming
Privacy and security reviews



Measure

Metrics for testing
Analysis of test results



Manage

User agency
Human oversight
Transparency
Ongoing monitoring

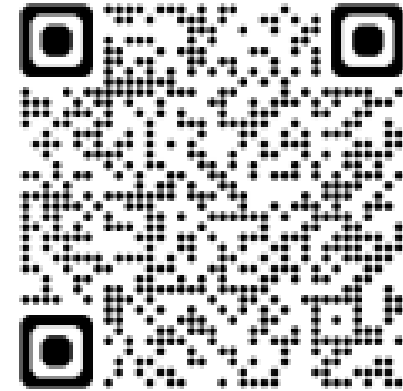
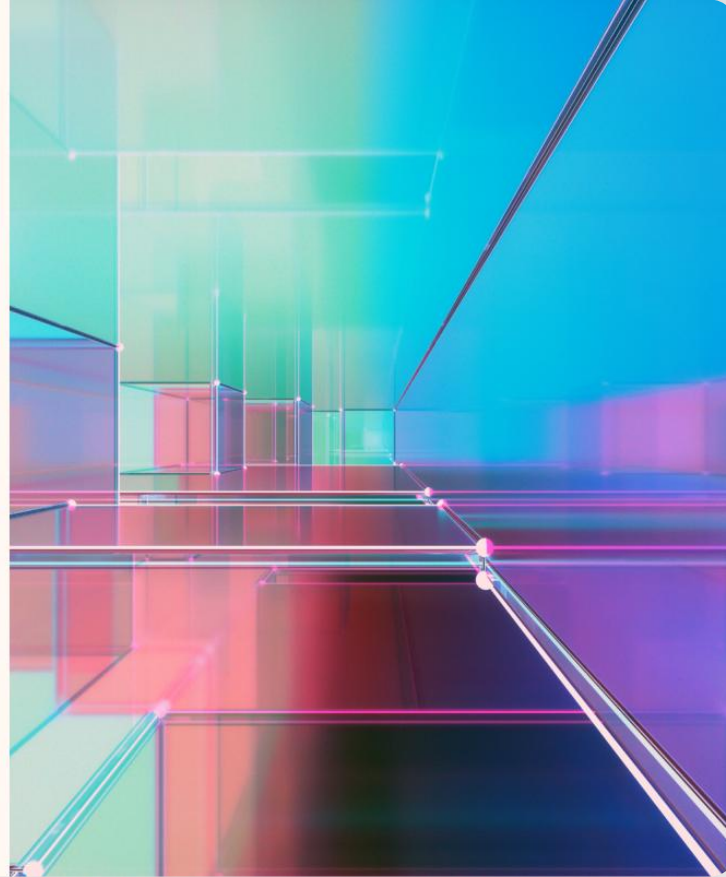
Responsible AI Transparency Report



Responsible AI Transparency Report

How we build, support
our customers, and grow

May 2024



How we make decisions about releasing generative applications

We use a multi-layered approach to manage and mitigate risks for generative AI systems at every layer in our tech stack from the models to the applications they're deployed in.

Case study

GitHub Copilot



Govern

GitHub Copilot team works to map, measure and manage risks and complete the **RAI review process** with support from the **RAI Champ**



Map

RAI impact assessment, security review, and privacy review to map risks



Measure

Assessing performance, quality of responses, and conducting research to assess GitHub Copilot's **fitness for purpose**



Manage

Human oversight
Staying on topic
Transparency

Microsoft's existing privacy commitments apply to AI



We will keep your organization's data private



You are in control of your organization's data



Your access control and enterprise policies are maintained



Your organization's data is not shared



Your organization's data security and privacy are protected by design



Your organization's data is not used to train foundation models without your permission



Our products and solutions comply with global data protection regulations

Microsoft Responsible AI Partner Initiative

We are excited to foster a culture of collaboration and continuous learning within our partner ecosystem.

RAI Initiative partners have:

- Comprehensive AI practices
- Dedicated responsible AI resources
- Experience developing and deploying of responsible AI systems on Azure

Visit

aka.ms/RAI-Partner-Innovation

accenture

BAIN & COMPANY

avanade

Capgemini

cognizant

IBM

EY

pwc

Infosys

kyndryl

KPMG



How Microsoft is taking down AI hackers who create harmful images of celebrities and others

Thank you